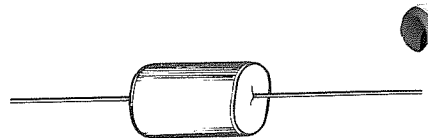


# 40L Snubber and High-Current DC Capacitors

## 400 and 600 Volts Peak

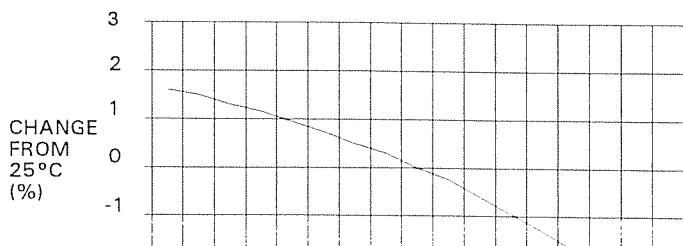
The 40L series are high-performance dry, axial-leaded capacitors specifically designed for demanding electronic applications. They are commonly used in input and output filters and for dc blocking in high-frequency switch-mode power supplies. The low electrical losses of the polypropylene film dielectric combined with the enhanced current carrying ability of the special "graded" metallized electrodes results in outstanding performance.



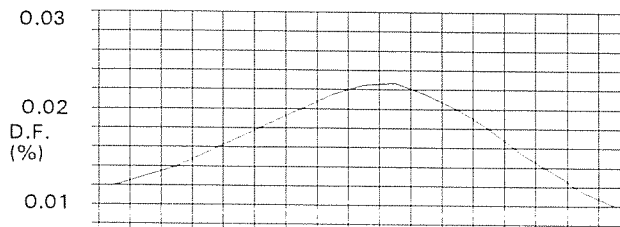
### SPECIFICATIONS

Available Capacitance Range:	0.47 to 6.8 mF
Capacitance Tolerance:	±10%
Capacitance Variation with Temperature:	±3% from -55 °C to +105 °C
Rated Voltage:	See Ratings Tables. The rating is the Maximum Peak dc voltage.
Rated Current	See Ratings Table. The rating is the Maximum Allowable RMS current in amperes.
Equivalent Series Resistance (ESR)	See Rating Table. The rating is the maximum value measured at 25 °C in the range 20 to 100,000 Hz.
Operating Temperature:	-55 °C to +105 °C
Storage Temperature:	-55 °C to +105 °C
Dissipation Factor:	0.1% maximum
Insulation Resistance:	200,000 MW - μF minimum at 100 V dc after 1 minute energization at 25 °C.
Leads:	20 or 18 AWG electroplated solid copper wire leads (gauge tolerance: ±0.001 in.)
Package Construction:	Fire retardant tape wrap with polyurethane potting compound.

% CAPACITANCE CHANGE vs TEMPERATURE



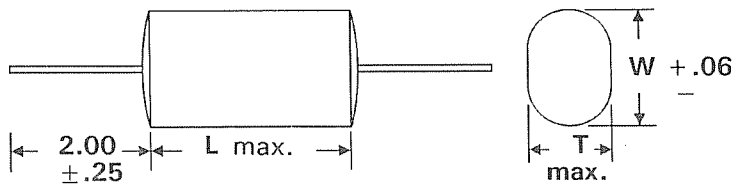
% DISSIPATION FACTOR vs TEMPERATURE



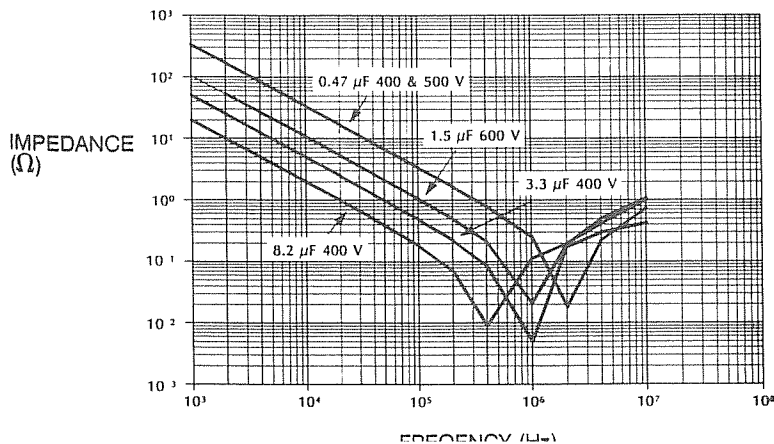
## 40L Snubber and High-Current DC Capacitors

Capacitance ( $\mu\text{F}$ )	Catalog Number	T	Dimensions W L		Lead Size AWG	ESR ( $\text{m}\Omega$ )	Current (A)
<b>400 Volts DC</b>							
0.47	40L3472	0.28	0.47	1.25	20	21	4
0.68	40L3682	0.30	0.53	1.25	20	13	6
1.00	40L3101	0.39	0.59	1.25	20	11	9
1.50	40L3151	0.48	0.69	1.25	20	9	10
2.00	40L3201	0.48	0.69	1.25	20	9	10
2.20	40L3221	0.56	0.83	1.25	20	8	11
3.30	40L3331	0.69	0.93	1.25	20	7	15
4.70	40L3471	0.64	0.88	1.75	18	7	17
6.80	40L3681	0.67	0.90	2.25	18	7	17
<b>600 Volts DC</b>							
0.47	40L6472	0.46	0.69	1.25	20	13	4
0.68	40L6682	0.55	0.79	1.25	20	10	6
1.0	40L6101	0.67	0.91	1.25	20	8	9
1.5	40L6151	0.73	0.97	1.50	20	7	11
2.2	40L6221	0.64	0.88	2.25	18	10	13

OUTLINE DIMENSIONS (All Dimensions in Inches)



IMPEDANCE vs FREQUENCY



INSULATION RESISTANCE vs TEMPERATURE

